

INTERLUX[®]

 **EXPERT IN THE
ADVACNE ADHESIVE**
Solution Tailored
**SPECIALLY FOR TILES & STONES
INSTALLATION**





Incorporated in the year 1988, at Delhi, Punjab, Haryana India, Interlux Distinguished Manufacturer, Exporter, Supplier, Distributor, Importer of the premium quality assortment of Construction Chemicals.



OUR COMPANY Introduction



Admixtures



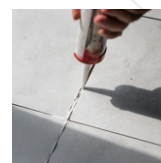
Waterproofing



Grouting



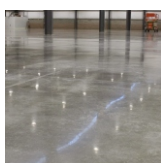
Adhesive and Repairs



Sealants



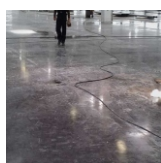
Surface Treatment



Liquid Floor



Highway Repairs



Industrial Floor Surfaces



Wall Finishing



Protective Coating



Prepacked Concrete and Mortar

The proficiency and knowledge of the domain that we possess, has proven to be hugely contributory towards the incredible success we have within a very short period of time.

Our procurement agents only procure products from famous and certified manufacturers to ensure that the products are of finest quality.

Our tie-ups with reliable vendors allow us to be sure that the sourced products are in tune with the set parameters of the industry.

These products are stored in an ultramodern warehousing that facilitates safeguard of the products as well.

Based on the requests of the patrons, we also offer customized solutions and easy payment modes.

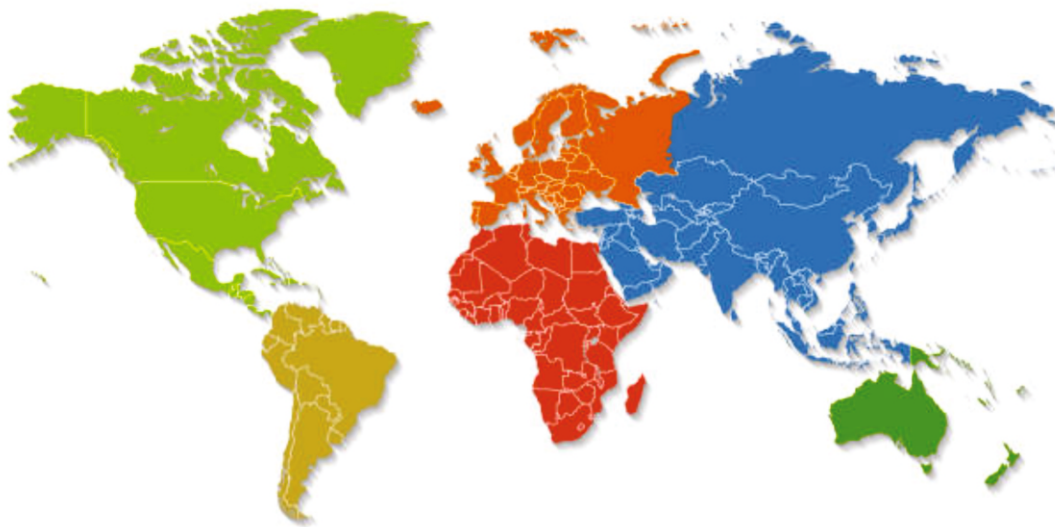
Aryan Paints, proudly serving since 1988 !

With our dedication to quality, we craft a diverse range of paint products guaranteed to impress.

Experience excellence with every brush stroke as we promise unmatched quality for our cherished customers.

Our Expert Team Member

We have a team of skilled and hard-working professionals that helps us in attaining our purpose of offering a premium range of construction chemicals. These experts possess utmost expertise in their related domains and are further updated with contemporary developments by means of regular training sessions and workshops. Our extremely competent workforce works in close management with each other to offer a best operational efficiency. Our team comprises of procurement experts quality controllers, sales professionals and warehousing experts for smooth business development.



OUR PRESENCE

SINGAPORE
MIDDLE EAST
FAR EAST
ASIA
AFRICA

Our Company Objective

The company has set an objective for our entity for achieving maximum client contentment by directing our actions towards their demands. With constant support and motivation, our team works with great diligence and commitment for meeting the goal. This has helped in the massive success and growth of our Organization.



Skilled and
Hard-Working Professionals



Procurement of products from
Famous and Certified Manufacturers



Premium Range of Construction
Chemicals

Our Standards



ADHESIVE CLASSIFICATION AS PER EN 12004 STANDARD

Tiles Adhesives are defined in three types, these are:

C - CEMENTITIOUS ADHESIVE

D - DISPERSION ADHESIVE

R - REACTION ADHESIVE

Each type of Adhesive can potentially have additional characteristics, which fall under the following classes:

1 - NORMAL ADHESIVE (Standard Strength Tile Adhesive)

2 - IMPROVED ADHESIVE (Stronger Tile Adhesive)

F - FAST SETTING/DRYING ADHESIVE (with Minimum Tensile Strength of 0.5mPa within 6 hours)

T - SLIP RESISTANT ADHESIVE (Tile Downward Movement on Adhesive Applied Vertical Surface must be <0.5mm.

E - ADHESIVE WITH EXTENDED OPEN TIME (Once Spread, the Adhesive can be left without a Tile Being Fixed for a Longer Time)

S - SPECIAL DEFORMABLE CHARACTERISTICS, FOR CEMENTITIOUS ADHESIVES ONLY

(Degree of Flexibility of the Adhesive, Either S1 - Flexible or S2 - Highly Flexible)



ADHESIVE CLASSIFICATION AS PER IS 15477 : 2019

SL NO.	CHARACTERISTIC	TECHNICAL SPECIFICATIONS				
		TYPE-1	TYPE-2	TYPE-3	TYPE-4	TYPE-5
i	Tensile Adhesion Strength, Min					
a	Dry Condition	≥ 0.5	≥ 1.0	≥ 1.5	≥ 2	≥ 2.0
b	Wet Condition	—	≥ 1.0	≥ 1.0	≥ 1.0	—
ii	Shear Adhesion Strength, Min					
a	Dry Condition	≥ 1.0	≥ 1.25	≥ 1.5	≥ 2.5	≥ 6.0
b	Heat Aging Condition	—	≥ 1.0	≥ 1.0	≥ 1.0	≥ 3.0
c	Wet Condition	—	≥ 1.0	≥ 1.0	≥ 1.0	—

Mobile Application

INTERLUX has newly introduced a mobile application and hosts a variety of helpful features in the palm of your hand. The mobile application consists of product information, marketing collaterals, news & updates and also features few redemption points for masons and dealers



App Store



Google Play Store



TILE ADHESIVE ALL RANGE



C1T TYPE-1

Product **BOND MASTER-200**

DESCRIPTION

A factory-made bagged cementitious polymer based powder, containing portland cement and silica sand, It can be mixed with water for installing small & medium size ceramic & vitrified floor tiles in interior areas using the thinset method of installation

SUITABLE SUBSTRATES

Concrete/Cement Plaster/Brick Masonry/
Cement Based Screeds • Cement Based Surfaces

STANDARD COMPLIANCE / SPECIFICATION

We are proud to inform you that all our products adhere strictly to ISI norms, ensuring the highest level of quality and durability.

FEATURES / ADVANTAGE:-

- Easy to use - just add water on site, ready to use.
- Self- curing properties, which allows hassle-free application with m labor.
- Low VOC - for healthy living.

CONSUMPTION

Approx 1.2 Kg/m² per mm of thickness covarge will vary depending on trowel notch size, type, size of tile and substrate smoothness and evenness.

PRECAUTION & NOTE

- Always add powder to water.
- Do not add excess water than recommended.
- Never add sand & cement at site.
- Do not use on wet screed. Surface must be fully cured.
- Do not use the adhesive to correct surface irregularities greater than 15 mm.

MIXING

- Add 5 to 6 litre water for 20 kg pack powder.
- Mix with suitable mechanical stirrer until a lamps free homogenous paste.
- Leave mixture for 5 min. before use.

PACKAGING & COLOUR

20Kg.Grey

SHELF LIFE

12 months for sealed pack when stored under cover, Out of direct sunlight, damp proof condition and protect from extremes of temperature.



C2TE TYPE-2

Product **PRO FIX-550**

DESCRIPTION

Interlux Pro Fix-550 is High Performance Polymer based adhesive to be mixed with water or latex for installing medium & Large ceramic tiles, vitrified tiles, small format natural stones in interior & Exterior areas.

SUITABLE SUBSTRATES

Cement-based screeds & bad/Gypsum & Cement based plasters/concrete surfaces & bricks/Existing tiles & stones/water proofing products/other cement based surface.

STANDARD COMPLIANCE / SPECIFICATION

We are proud to inform you that all our products adhere strictly to ISI norms, ensuring the highest level of quality and durability.

FEATURES / ADVANTAGE:-

- Easy to use - just add water on site, ready to use.
- Ideal product for tile on tile applications on floor.
- Sag resistant formula provides hassle free application on vertical walls.
- Low VOC for healthy living.

CONSUMPTION

Approx 1.2 Kg/m² per mm of thickness covarge will vary depending on trowel notch size, type, size of tile and substrate smoothness and evenness.

PRECAUTION & NOTE

- Always add powder to water.
- Do not add excess water than recommended.
- Never add sand & cement at site.
- Do not use on wet screed. Surface must be fully cured.
- Do not use the adhesive to correct surface irregularities greater than 15 mm.

MIXING

- Add 5 to 6 litre water for 20 kg pack powder.
- Mix with suitable mechanical stirrer until a lamps free homogenous paste.
- Leave mixture for 5 min. before use.

PACKAGING & COLOUR

20Kg.Grey
20Kg.White

SHELF LIFE

12 months for sealed pack when stored under cover, Out of direct sunlight, damp proof condition and protect from extremes of temperature.



C2TE TYPE-3

Product **ULTRA BOND-600A**

DESCRIPTION

A multipurpose, High polymer modified powder offering vast utility including applications for floor & wall in interior & exterior areas. It is a cementitious thin-set powder to be mixed only with water to install various types of medium & large format tiles & stone on a variety of substrates.

SUITABLE SUBSTRATES

Cement-based screeds & bad/Gypsum & Cement based plasters/renders, concrete surfaces & bricks, existing tiles & stones, waterproofing products, other cement based surface.

STANDARD COMPLIANCE / SPECIFICATION

We are proud to inform you that all our products adhere strictly to ISI norms, ensuring the highest level of quality and durability.

FEATURES / ADVANTAGE:-

- Easy to use - just add water on site, ready to use.
- Water & shock resistant suitable for wet areas and commercial floor too.
- Substains heat ageing making it ideal for high temperature locations and for hot temperature applications, like jacuzzi, sauna etc.
- Low VOC - for healthy living.

CONSUMPTION

Approx 1.2 Kg/m² per mm of thickness covarge will vary depending on trowel notch size, type, size of tile and substrate smoothness and evenness.

PRECAUTION & NOTE

- Always add powder to water.
- Do not add excess water than recommended.
- Never add sand & cement at site.
- Do not use on wet screed. Surface must be fully cured.
- Do not use the adhesive to correct surface irregularities greater than 15 mm.

MIXING

- Add 5 to 6 litre water for 20 kg pack powder.
- Mix with suitable mechanical stirrer until a lamps free homogenous paste.
- Leave mixture for 5 min. before use.

PACKAGING & COLOUR

20Kg.Grey
20Kg.White

SHELF LIFE

12 months for sealed pack when stored under cover, Out of direct sunlight, damp proof condition and protect from extremes of temperature.



C2TE TYPE-4

Product **SUPER STICK-40**

DESCRIPTION

Interlux Super Stick - 40 is a highly polymer modified, thin - set tile adhesive for fixing all types of ceramic vitrified tile, mosaic tiles, natural stones and marbles on a variety of surfaces, for both vertical and horizontal application, in dry as well as wet areas for indoor as well as outdoor application. It is also recommended for Tile on Tile applications also.

SUITABLE SUBSTRATES

Cement-based screeds & bad/Gypsum & Cement based plasters/renders, concrete surfaces & bricks, existing tiles & stones, waterproofing products, other cement based surface.

STANDARD COMPLIANCE / SPECIFICATION

We are proud to inform you that all our products adhere strictly to ISI norms, ensuring the highest level of quality and durability.

FEATURES / ADVANTAGE:-

- Highly polymer modified - provides high adhesive, allows to bond with variety of substrates, for fixing a variety of tiles and stones.
- Water & shock resistant - suitable for wet areas and commercial floor too.
- Substains heat ageing - making it ideal for high temperature.
- Low VOC for healthy living.

CONSUMPTION

Approx 1.2 Kg/m² per mm of thickness covarge will vary depending on trowel notch size, type, size of tile and substrate smoothness and evenness.

PRECAUTION & NOTE

- Always add powder to water.
- Do not add excess water than recommended.
- Never add sand & cement at site.
- Do not use the adhesive to correct surface irregularities greater than 15 mm.
- Protect from direct rainfall / foot traffic for at least 24 hrs.
- Leave gap between the tile and fill gaps with Seal Flex-870 Epoxy Grout.

MIXING

- Add 5 to 6 litre water for 20 kg pack powder.
- Mix with suitable mechanical stirrer until a lamps free homogenous paste.
- Leave mixture for 5 min. before use.

PACKAGING & COLOUR

20Kg.Grey
20Kg.White

SHELF LIFE

12 months for sealed pack when stored under cover, Out of direct sunlight, damp proof condition and protect from extremes of temperature.





C2TE S1 TYPE-4

Product PRO BOND-H-50

DESCRIPTION

Interlux Pro Bond-H-50 is a highly polymer modified, thin-set tile adhesive for fixing for all type of tiles, and natural stones & Marbles on a variety of surfaces, for both vertical and horizontal application, in dry as well as wet areas for indoor as well as outdoor application. It can be used to fix regular size tile in commercial area as it accommodates shocks due to heavy traffic.

SUITABLE SUBSTRATES

Cement-based screeds/bed, gypsum & cement based plasters/renderers, concrete surfaces & bricks, existing tiles & stone, other cement-based surface, waterproofing products, drywall like cement/bison/gypsum boards.

STANDARD COMPLIANCE / SPECIFICATION

We are proud to inform you that all our products adhere strictly to ISI norms, ensuring the highest level of quality and durability.

FEATURES / ADVANTAGE:-

- High bond strength with no shrinkage cracks.
- Non slip. Excellent initial adherence.
- Good adhesive bond strength & Bonds to various cement-based substrates.
- Before using it is guided to consult Interlux technical team.

CONSUMPTION

Approx 1.2 Kg/m² per mm of thickness coverage will vary depending on trowel notch size, type, size of tile and substrate smoothness and evenness.

PRECAUTION & NOTE

- Always add powder to water.
- Do not add excess water than recommended.
- Never add sand & cement at site.
- Do not use the adhesive to correct surface irregularities greater than 15 mm.
- Protect from direct rainfall / foot traffic for at least 24 hrs.
- Leave gap between the tile and fill gaps with Seal Flex-870 Epoxy Grout.

MIXING

- Add 5 to 6 litre water for 20 kg pack powder.
- Mix with suitable mechanical stirrer until a lamps free homogenous paste.
- Leave mixture for 5 min. before use.

PACKAGING & COLOUR

20Kg. Grey
20Kg. White

CONSUMPTION

Approx 5-6 m² / 20kg Bag at 3mm thickness (using 6mm x 6mm notch).
Approx 1.2kg/m² per mm of thickness.
Coverage will vary depending on trowel notch size, type size of tile and substrate smoothness and evenness.

SHELF LIFE

12 months for sealed pack when stored under cover, Out of direct sunlight, damp proof condition and protect from extremes of temperature.



C2TE S2 TYPE-4

Product PRO BOND-H-60

DESCRIPTION

Interlux Pro Bond-H-60 is a highly polymer modified, thin-set tile adhesive for fixing for all type of tiles and natural stones & Marbles on a variety of surfaces, for both vertical and horizontal application, in dry as well as wet areas for indoor as well as outdoor application. It can be used to fix regular size tile in commercial area as it accommodates shocks due to heavy traffic.

SUITABLE SUBSTRATES

Cement-based screeds/bed, gypsum & cement based plasters/renderers, concrete surfaces & bricks, existing tiles & stone, other cement-based surface, waterproofing products, drywall like cement/bison/gypsum boards.

STANDARD COMPLIANCE / SPECIFICATION

We are proud to inform you that all our products adhere strictly to ISI norms, ensuring the highest level of quality and durability.

FEATURES / ADVANTAGE:-

- High bond strength with no shrinkage cracks.
- Non slip. Excellent initial adherence.
- Good adhesive bond strength & Bonds to various cement-based substrates.
- Before using it is guided to consult Interlux technical team.

CONSUMPTION

Approx 1.2 Kg/m² per mm of thickness coverage will vary depending on trowel notch size, type, size of tile and substrate smoothness and evenness.

PRECAUTION & NOTE

- Always add powder to water.
- Do not add excess water than recommended.
- Never add sand & cement at site
- Do not use on wet screed. Surface must be fully cured.
- Do not use the adhesive to correct surface irregularities greater than 15 mm.
- Protect from direct rainfall / foot traffic for at least 24 hrs.
- Leave gap between the tile and fill gaps with Seal Flex-870 Epoxy Grout.

MIXING

- Add 5 to 6 litre water for 20 kg pack powder.
- Mix with suitable mechanical stirrer until a lamps free homogenous paste.
- Leave mixture for 5 min. before use.

PACKAGING & COLOUR

20Kg. Grey
20Kg. White

CONSUMPTION

Approx 5-6 m² / 20kg Bag at 3mm thickness (using 6mm x 6mm notch).
Approx 1.2kg/m² per mm of thickness.
Coverage will vary depending on trowel notch size, type size of tile and substrate smoothness and evenness.

SHELF LIFE

12 months for sealed pack when stored under cover, Out of direct sunlight, damp proof condition and protect from extremes of temperature.



Product **EPOXY GROUT SEALFLEX-870**

DESCRIPTION

Interlux Epoxy Grout Sealflex - 870 is a two component epoxy -based grout for floors & walls for interior with a high degree of chemical resistance, hard wearing, color fastness and impervious tile joint. It is suitable for residential and commercial installation for resisting substantial abuses, and chemical attacks.

FEATURES / ADVANTAGE:-

- Especially for decoration: smooth, even water proof finish.
- Easy to mix, apply and clean.
- No Cracking.
- Uniform colour with anti fungal and anti bacterial properties.

APPLICATION AREAS

Walls and Floors/Interiors/Dry Areas Showers/ Swimming Pools/Heavily/Trafficked Floors/ Hygienic Sterile Areas/Kitchens And Cafeterias.

SAFETY PRECAUTIONS

Keep out of reach of children.

suitable protective clothing, gloves and eyes/face protection.

After contact with skin, wash immediately with plenty of clean water.

In case of contact with eyes rinse immediately with plenty of clean water seek medical advice. Limited to professional use only For more details, please refer the relevant material safety date-sheet available on request.

PACKAGING & COLOUR

1Kg., 5Kg.

SHELF LIFE

24 months for sealed pack when stored under cover, Out of direct sunlight, dampproof condition and protect from extremes of temperature (Store between + 15 C to + 35 C temperature).



Product **EPOXY GROUT PROSEAL-830**

DESCRIPTION

Interlux Epoxy Grout Sealflex-830 is a three component high performance, universal, elastomeric polyurethane resin adhesive used for high adhesion fixing of all types of tiles and stones joints including composites, engineered nano stone, metal & glass tiles on interior and exterior floor & wall. It is also suitable for fixing all type of tiles / stone over deformable surface with no vertical slip.

FEATURES / ADVANTAGE:-

- Non Shrink and solvent free system.
- High Bond Strength, chemical resistant.
- For Indoor and Outdoor usage.
- Non slumping no primer required.

APPLICATION AREAS

Walls and Floors/Interiors/Dry Areas Showers/ Swimming Pools/Heavily/Trafficked Floors/ Hygienic Sterile Areas/Kitchens And Cafeterias.

SAFETY PRECAUTIONS

Keep out of reach of children.

suitable protective clothing, gloves and eyes/face protection.

After contact with skin, wash immediately with plenty of clean water.

In case of contact with eyes rinse immediately with plenty of clean water seek medical advice. Limited to professional use only For more details, please refer the relevant material safety date-sheet available on request.

PACKAGING & COLOUR

1Kg., 5Kg.

SHELF LIFE

24 months for sealed pack when stored under cover, Out of direct sunlight, dampproof condition and protect from extremes of temperature (Store between + 15 C to + 35 C temperature).



1Kg.



Product GROUT ARMOR

Interlux Tile Grout is a high performance polymer modified Tile Grout with non-shrink properties, excellent workability for grouting tile joints in wet and dry areas for internal and external application.

Features / Advantages:-

- High abrasion resistance
- Very low water absorption
- Stain resistance
- Non-shading colour
- Easy to finish
- Anti-cracks (joints up to 3 mm width)
- Low shrinkage and High Strength
- Smooth finishing

Coverage

$$\frac{(L+B) \times T \times W \times 2000}{(L+B)} \text{ g/m}^2$$

Where
 L = Length of Tile (mm)
 B = Breath of Tile (mm)
 T = Thickness of Tile (mm)
 W = Width of Tile Joint (mm)

APPLICATION AREAS

Walls & Floors / Interior & Exterior / Dry Areas / Showers / Swimming Pools / Heavily Trafficked Floors / Movement vibration



100ml.

Product GROUT ADMIXTURE

Interlux Grout Admixture is a white synthetic polymer additive for use with cement based grouts such as CEMENT POLYMER GROUT and WIDE JOINT GROUT for tile joint grouting works. The addition of GROUT ADMIX to cement based grouts improves the adhesion strength to tiles, abrasion resistance, flexibility and reduces the water permeability of the grouts.

Features / Advantages:-

- Improves Flexibility
- Reduced Water Permeability:
- Improves Water Resistance
- Improves the Adhesion Strength
- Increase the Abrasion Resistance of Grout
- Suitable for Submerged Conditions
- Suitable for Interior & Exterior

PROTECTION: Generally, light foot traffic can be allowed in 24 hours at 25°C, normal foot traffic in 36 hours and heavy foot traffic in 72 hours. Grouted area should be kept dry and protected from exposure to dust, dirt, food or other chemicals, that could stain or attack the grout and spoil the colour.

APPLICATION AREAS

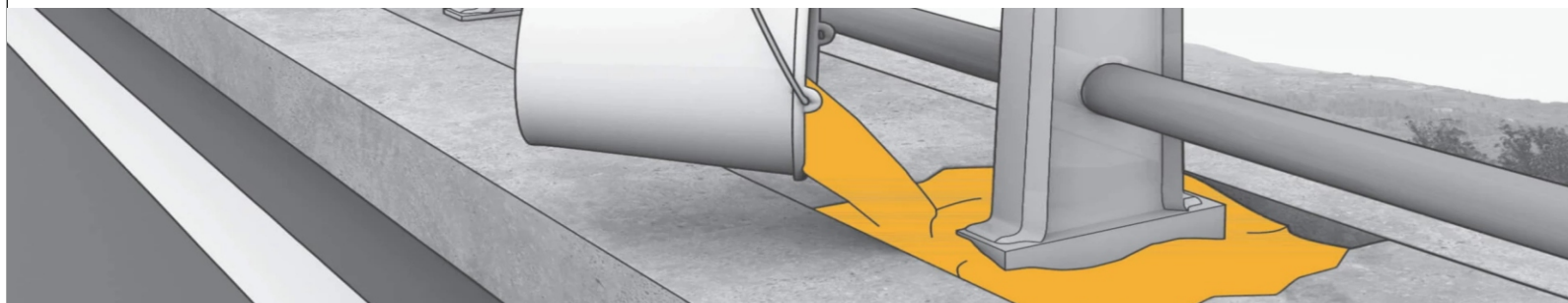
Tile and Stone joint grouting works.

CONSUMPTION

Use approximately 200ml. of Grout Admix for 1 Kg. of Interlux Unsanded Grout.

WHITE LIQUID

100ml Pack





1Ltr.



Product **TILE CLEANER**

Interlux Tile Cleaner is a non HCL organic acidic cleaner & degreaser developed specifically for tile, grout, natural & cast stone and masonry surfaces. Bio Clean will handle difficult stains, yet it is gentle enough for everyday use. It is very effective as an ongoing maintenance cleaner for surfaces previously sealed with the appropriate Miracle Penetrating Sealer/ Impregnation. It is quite effective at removing most factory-applied waxes and floor finishes, and is ideal for areas that have been neglected or subject to heavy use.

Features / Advantages:-

- Removes most wax, grease, soap scum, body oil, mildew stains and algae
- Ideal for neglected areas or areas subjected to heavy use
- Specially formulated to strip off synthetic and acrylic waxes and floor finishes
- Easy to use and cost effective
- Can be used for Interior and Exterior Surfaces
- Environment friendly & spreads refreshing lemon fragrance

CONSUMPTION

1 Litre will approximate cover 50-150 Sq Foot Area*

*Coverage will vary depending on density, porosity, texture, surface absorption, weather, time solution left on surface and application methods.

LIMITATIONS

- Ensure that product does not come in contact with any non-recommended surfaces
- Regular use of cleaners will affect the performance of sealers applied on surfaces

APPLICATION SURFACES

Sanded Grout / Ceramic Tiles / Slate / Non
Sanded Grout / Glazed Tiles / Travertine /
Quarry Tiles / Terrazzo / Concrete / Clay Pavers /
Brick/Masonry/Swiftshine.



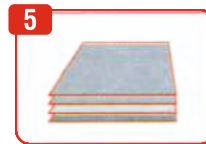
OUR VALUABLE CUSTOMERS



DIRECTION FOR USE (TILE & STONE ADHESIVE)



1 Clean the substrate of oil stains, remove dirt, dust and laitance with any suitable method and allow to dry them.



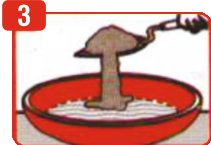
5 Tiles and Stones must be absolutely dry. If using metal as substrate it should be completely free from rust.



2 Mix as per mixing ratio defined in data sheet.



6 Apply firm pressure to ensure good contact and covering of the back.



3 For cementitious adhesive always add powder to water.



7 Joints between the tiles can be grouted after 12 hours with the appropriate Interlux cementitious or epoxy grouts, available in a variety of different colours. Expansion joints must be sealed with the special Interlux Sealants.



4 Apply adhesive over the surface using the straight edge of the notched trowel. If the adhesive is buttered to the tile, then ensure proper coverage of tile surface to avoid voids.



8 Floor are set to light foot traffic after 24 hours.

DIRECTION FOR USE (EPOXY TILE GROUT)



1 Clean the substrate of oil stains, remove dirt, dust and laitance with any suitable method and allow to dry them.



5 Use Interlux sponge rinsed in clean water for cleaning the surface.



2 Interlux Epoxy Grout is prepared by mixing together two component Part A and Part B from the bottom upwards. Pour Part B into the bucket containing Part A.



6 Joints between the tiles can be grouted after 12 hours with the appropriate Interlux cementitious or epoxy grouts, available in a variety of different colours. Expansion joints must be sealed with the special Interlux Sealants.



3 Mix Carefully by using a suitable stirrer. If an electric drill mixer is used, blend on low speed (less than 300rpm).



7 Surface is ready for foot traffic after 24 hours.



4 Fill the joints completely using rubber floater.



For more colours option and assistance, Scan the QR Code

Manufactured & Marketed By:
ARYAN PAINTS PVT. LTD.
(A Construction Chemical Division)

Works: Idgaha Road, Samsahabad (HR.)
Branch Office: F-225 A, Laxmi Nagar, Delhi-110092
E-Mail: info@interluxpaints.com,
Website: www.interluxpaints.com

Corporate Mailing Address:-
Singapore address:- **INTERLUX PAINTS**
Blk 410# 12-323 Serangoon Central Singapore-550410
Tel: +6591801688

FOR ANY TECHNICAL ASSISTANCE OR ENQUIRIES CALL
TOLL FREE: 1800-212-3494